

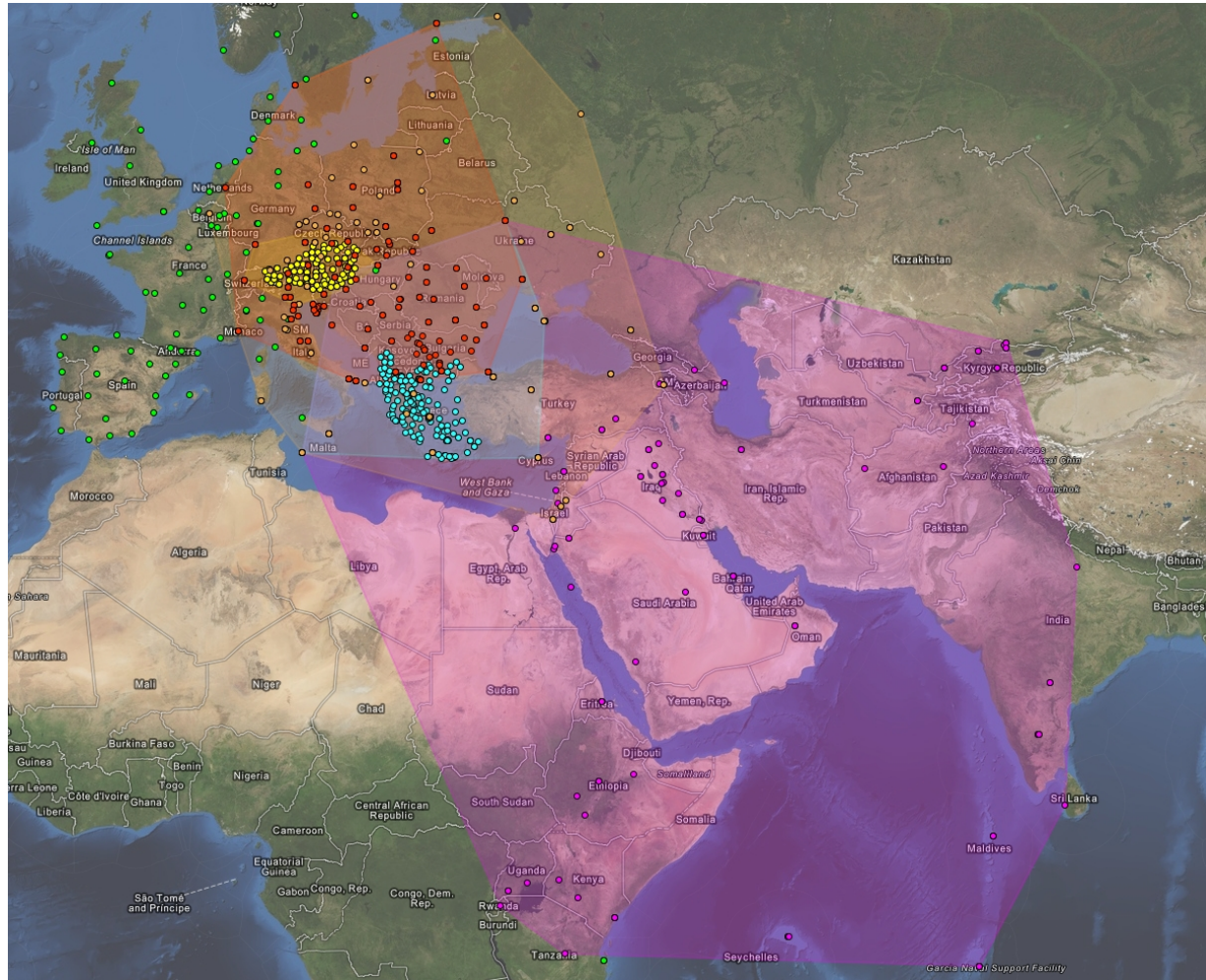
# OLG LAC report 2015

Philipp Mitterschiffthaler, Günter Stangl  
(Section Reference Systems)

**BEV - Bundesamt für Eich- und Vermessungswesen**



# Weekly analysis of 5 networks



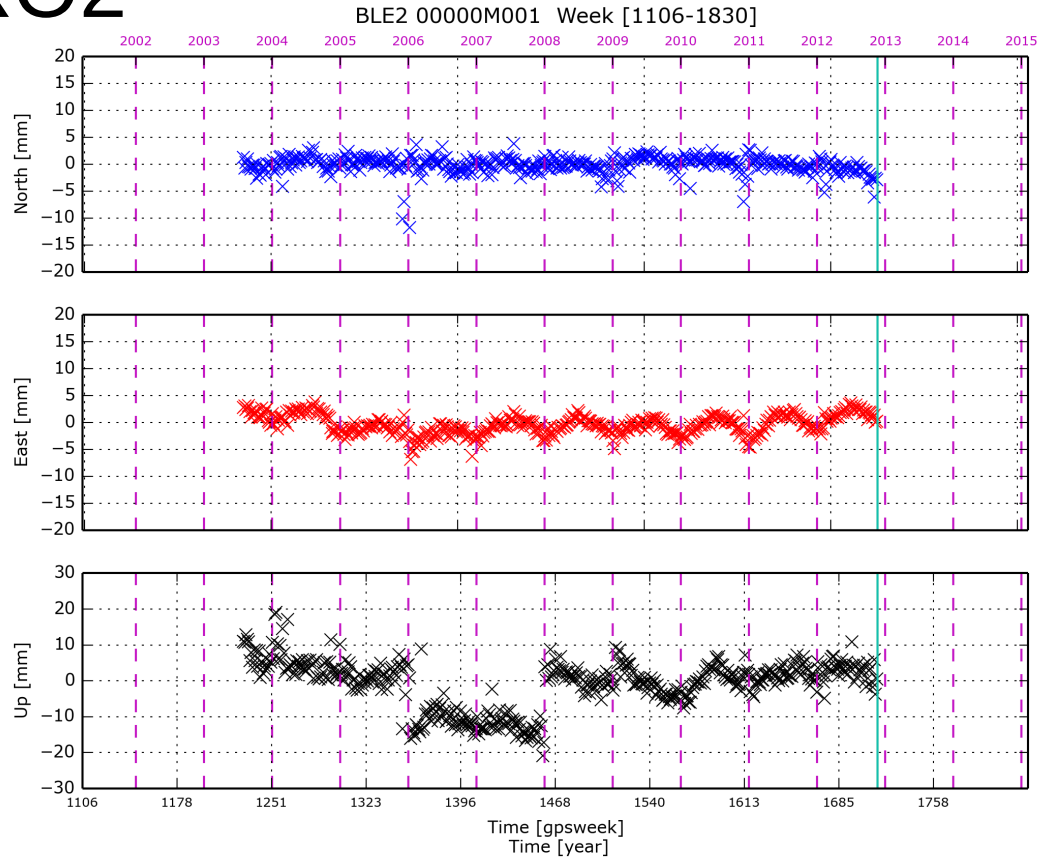
# REPRO2

- Start of reprocessing at epoch 2006.001
- All networks
- GLONASS data
- BSW 5.2
- Consistent set of metadata
- 2006 and 2007 already done

# Densification

- 4 networks submitted to EPN
- Problems of duplicate station Ids (non EPN stations)
- Problems of missing metadata
- Submitting REPRO2 data immediately?

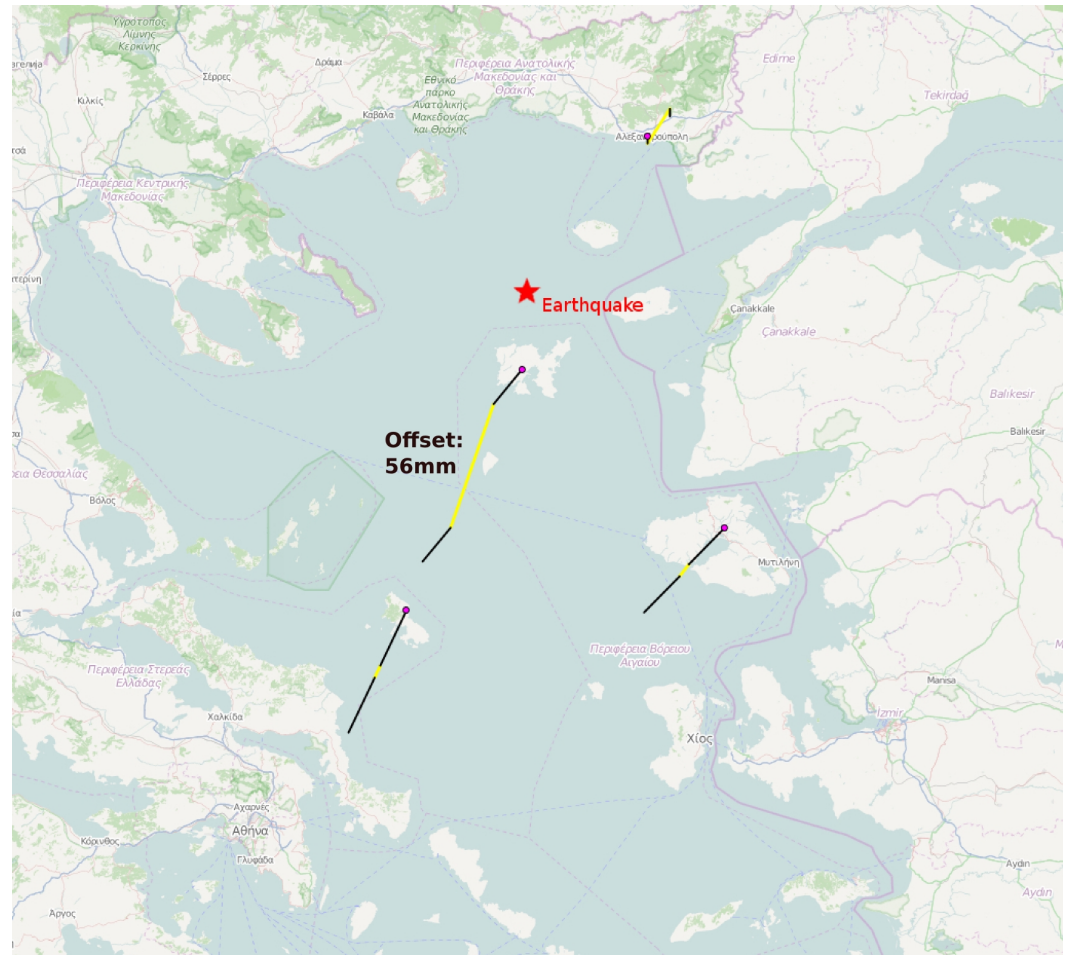
# REPRO2



Typically offsets in the up-component

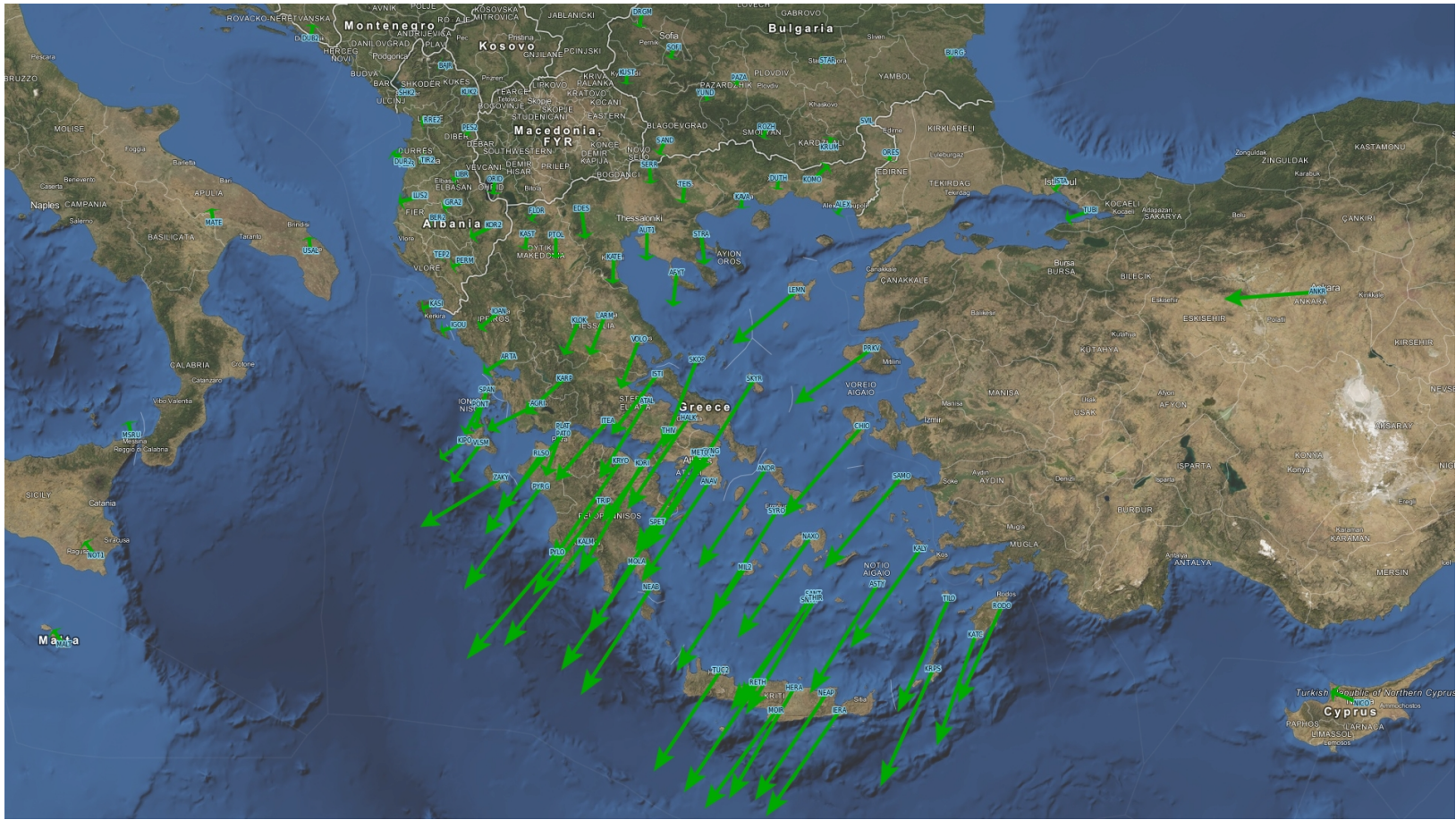
# Earthquakes

## Lemnos (05/2014)





# Velocities fields




## statmin v0.1

- Manage station metadata
- Analyze results
- Manage networks
- Manage datacenter and rinex files




## dashboard




915  
Stationen



119  
days  
Solutions



5  
Networks



API  
How to get  
the content

statmin

Station name

bipo

- [Station](#)
- [Equipment](#)
- [Advanced Station Information](#)
- [Antenna](#)
- [Agency](#)
- [Receiver](#)
- [Outliers](#)

ZIMM 14001M004 + Add Station... - Delete Station

**station**

Permanent station?

**Stationname:**

**Domes Number:**

**Short Abbreviation (2):**

**Long Abbreviation (4):**

✓ Save

**where station lives**

**City:**

**State:**

**2letter\_ISO\_Abreviation:**

**Tectonic plate:**

**Blq id:**

**Atl id:**

**apriori coord**

**X:**

**Y:**

**Z:**

**apriori velocity**

**Vx:**

**Vy:**

**Vz:**

**apriori delta**

**Dx:**

**Dy:**

**Dz:**

**apriori sigma**

**Sx:**

**Sy:**

**Sz:**

**rinex translation**

H + x

**statcrx**

+ add new stat crx...

- [Station](#)
- [Equipment](#)
- [Advanced Station Information](#)
- [Antenna](#)
- [Agency](#)
- [Receiver](#)
- [Outliers](#)

ZIMM 14001M004 + Add Station... - Delete Station

sitelogs

Title:

File:  Keine ausgewählt

Upload

file	description	date uploaded	date computed	
statmin/static/media/sitelogs/zimm_20150811.log	zimmerwald sitelog	Oct. 14, 2015, 6:15 a.m.	Oct. 14, 2015, 6:21 a.m.	<input type="button" value="i"/> <input type="button" value="o"/> <input type="button" value="x"/>

Start	End	Receiver	Rec#	Firmware	Antenna	Ant#	Radome	Ecc. North	Ecc. East	Ecc. Up	
<span style="background-color: #e0e0e0; padding: 2px 5px;">+ Add Equipment...</span>											
1993-05-01 00:00:00	1997-08-06 00:00:00	TRIMBLE 4000SSI	3310A0	6.12	TRM14532	3311A6790	NONE	0,0	0,0	0,0	<input type="button" value="H"/> <input type="button" value="+"/> <input type="button" value="x"/>
1997-08-06 00:00:00	1998-11-06 00:00:00	TRIMBLE 4000SSI	3310A0	7.25	TRM14532	3311A6790	NONE	0,0	0,0	0,0	<input type="button" value="H"/> <input type="button" value="+"/> <input type="button" value="x"/>
1998-11-06 00:00:00	1999-07-02 00:00:00	TRIMBLE 4000SSI	3310A0	7.25	TRM29659	99390	NONE	0,0	0,0	0,0	<input type="button" value="H"/> <input type="button" value="+"/> <input type="button" value="x"/>
1999-07-02 00:00:00	1999-08-16 00:00:00	TRIMBLE 4000SSI	3310A0	7.25	TRM29659	99390	NONE	0,0	0,0	0,0	<input type="button" value="H"/> <input type="button" value="+"/> <input type="button" value="x"/>
1999-08-16 00:00:00	2003-08-12 14:00:00	TRIMBLE 4000SSI	3310A0	7.29	TRM29659	99390	NONE	0,0	0,0	0,0	<input type="button" value="H"/> <input type="button" value="+"/> <input type="button" value="x"/>
2003-08-12 14:00:00	2006-02-22 14:00:00	TRIMBLE 4700	202247i	Nav 1.30 / Boot 1	TRM29659	99390	NONE	0,0	0,0	0,0	<input type="button" value="H"/> <input type="button" value="+"/> <input type="button" value="x"/>
2006-02-22 14:00:00	2008-04-01 14:09:59	TRIMBLE NETRS	452625i	Nav 1.15 / Boot 1	TRM29659	99390	NONE	0,0	0,0	0,0	<input type="button" value="H"/> <input type="button" value="+"/> <input type="button" value="x"/>
2008-04-01 14:09:59	2014-05-07 07:19:59	TRIMBLE NETRS	452625i	Nav 1.20	TRM29659	99390	NONE	0,0	0,0	0,0	<input type="button" value="H"/> <input type="button" value="+"/> <input type="button" value="x"/>
2014-05-07 07:19:59	2015-04-27 07:15:00	TRIMBLE NETRS	452625i	1.32	TRM29659	99390	NONE	0,0	0,0	0,0	<input type="button" value="H"/> <input type="button" value="+"/> <input type="button" value="x"/>
2015-04-27 07:15:00	2015-06-19 06:30:00	TRIMBLE NETR9	5429R4	4.85	TRM29659	99390	NONE	0,0	0,0	0,0	<input type="button" value="H"/> <input type="button" value="+"/> <input type="button" value="x"/>


## dashboard




915  
Stationen



119  
days  
Solutions









5  
Networks



API  
How to get  
the content


statmin

Station name   bipo

-  Austrian Monitoring Network
-  GREECE network
-  CEGRN
-  Monitoring Oriental Network
-  European Network
-  +new network

## AMO Austrian Monitoring Network

Stations Datumpoints Baselines

ZIMM 14001M004	1992-01-01 00:00:00	2999-12-31 23:59:59	  
STPO 11041S001	1992-01-01 00:00:00	2999-12-31 23:59:59	  
WTZR 14201M010	1992-01-01 00:00:00	2999-12-31 23:59:59	  
PENC 11206M006	1992-01-01 00:00:00	2999-12-31 23:59:59	  
GRAZ 11001M002	1992-01-01 00:00:00	2999-12-31 23:59:59	  



- Apriori values
- Metadata**
- Solution upload
- Solution download
- Helpers

## how to get the metadata

### STA - Station information

</api/get/stafile/mon/57248>

### APR - Apriori coordinates

</api/get/coords/mon/57248>

### BSL - Predefined Baselines

</api/get/bsl/mon/57248>

### ABB - Abbreviation table

</api/get/abbrevs/mon/57248>

### CRX - Station crx

</api/get/statcrxs/mon/57248>

### LYR - GEOJSON layers

</api/get/layers/mon/57248>

 statmin v0.1

- Access directly from BERNESE scripts

```
mst@GEOPC15: ~/GPSUSER52/SCRIPT
bipo@mst: ~/Downloads/anubis
mst@GEOPC15: ~/GPSUSER52/SCRIPT


# Run program
# -----
my $PGMNAM = "GPSEST";
$bpe->RUN_PGMS($PGMNAM);

# save solution in database!
# -----
my $netz='AMO';
system "curl -X POST -u ${ENV[S_USER]}:${ENV[S_PASS]} http://${ENV[S_HOST]}/api/upload/solution/bsl/$netz/$camp/$subPid/$mjd/ -F file=@${$bpe{SYSOUT}}";

}
~
~
~
```

statmin

Station name

Day: 262  
Date: 2015-09-19  
MJD: 57284.0  
GPSWeek: 1862-6  
Select date 

**Base Layers**

- OpenStreetMap
- EnviSat
- National borders

**AMO**

- points
- baselines
- horizontal
- up
- station name

**GRC**

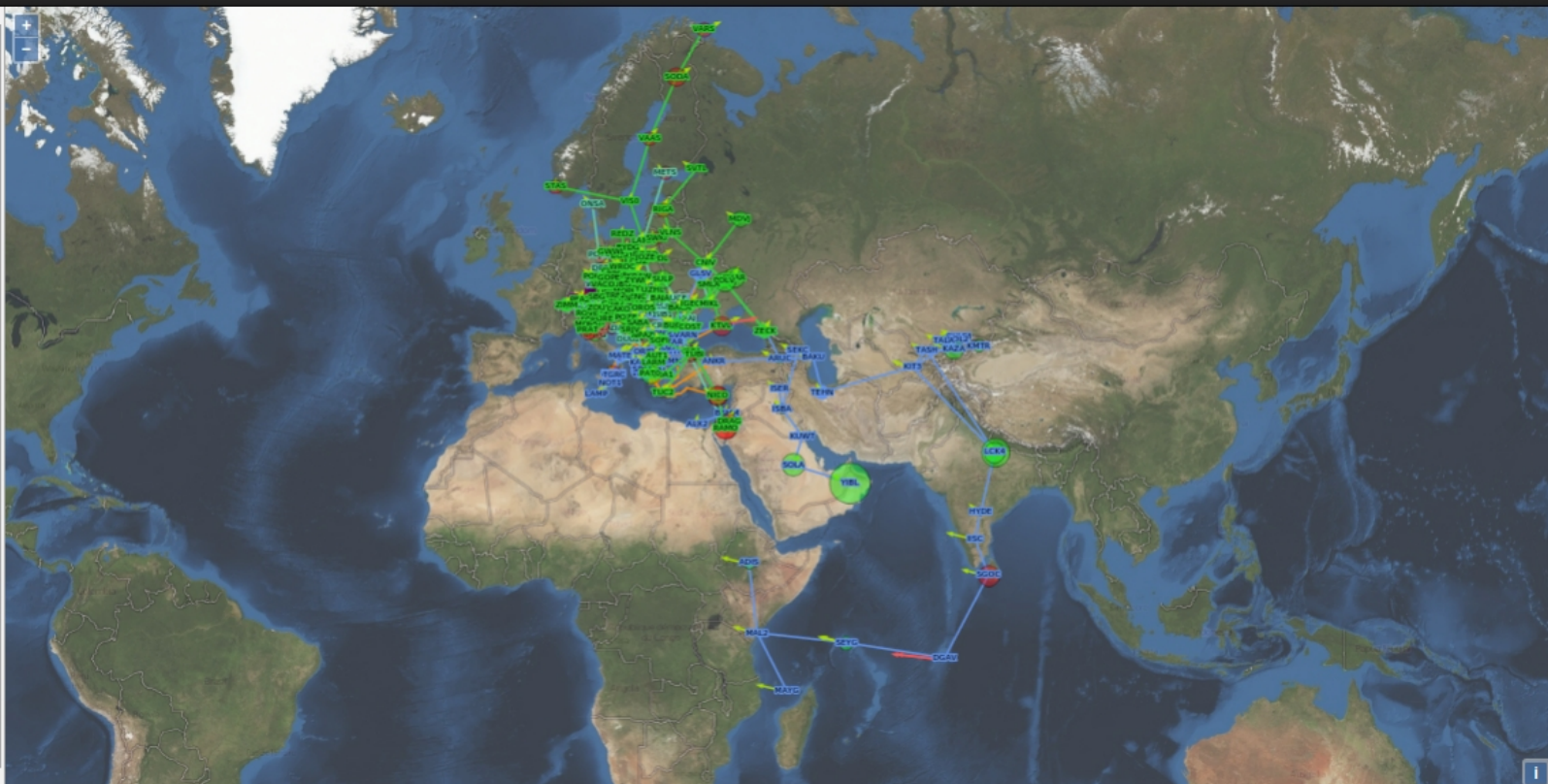
- points
- baselines
- horizontal
- up
- station name

**CEG**

- points
- baselines
- horizontal
- up
- station name

**MON**


- points
- baselines



statmin

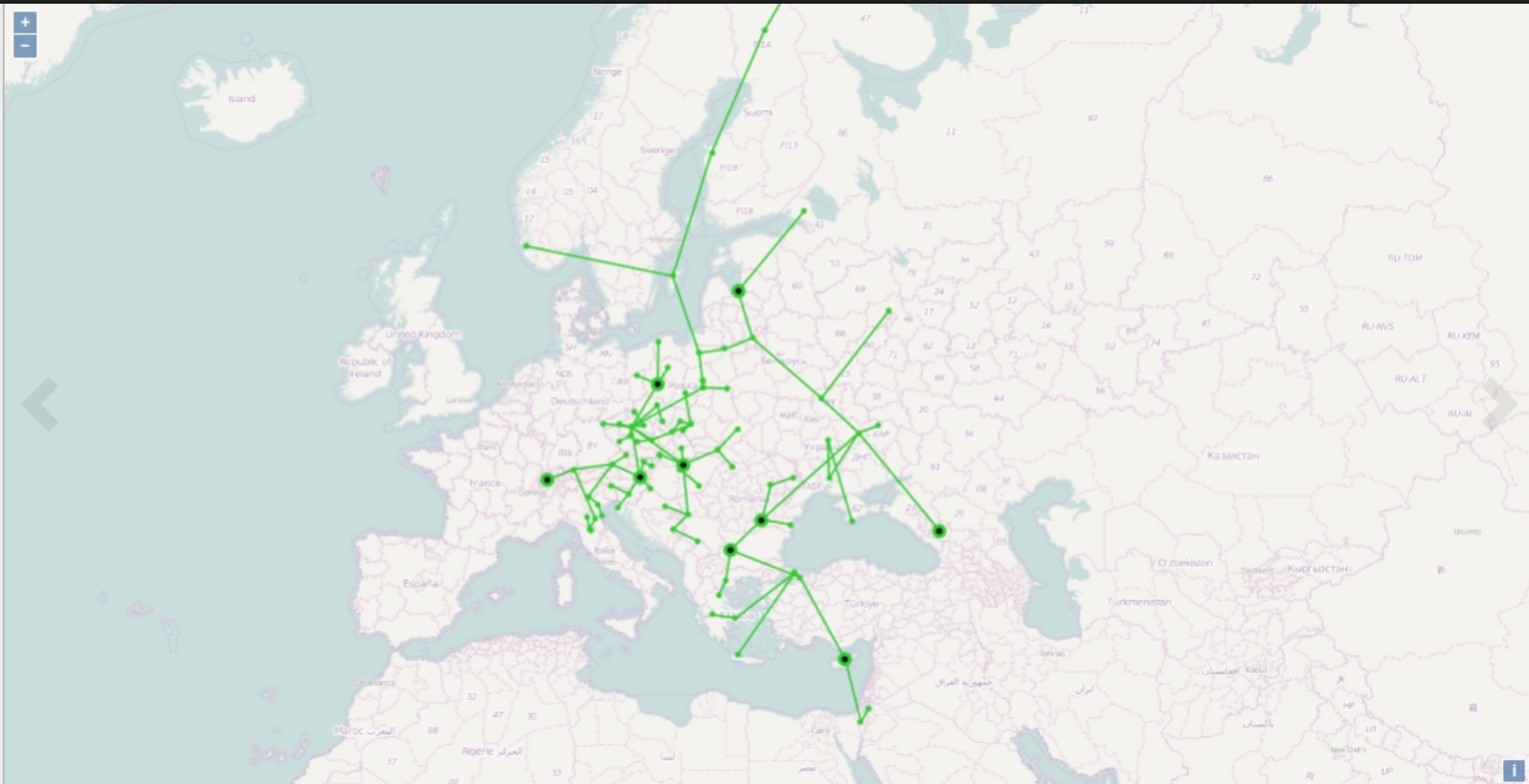
Station name

bipo

Doy: 262  
Date: 2015-09-19  
MJD: 57284.0  
GPSWeek: 1862-6  
Select date 


## Base Layers

- OpenStreetMap
- EnviSat
- National borders
  
- AMO
- GRC
- CEG
- MON
- EUR
- points
- baselines
- horizontal
- up
- station name



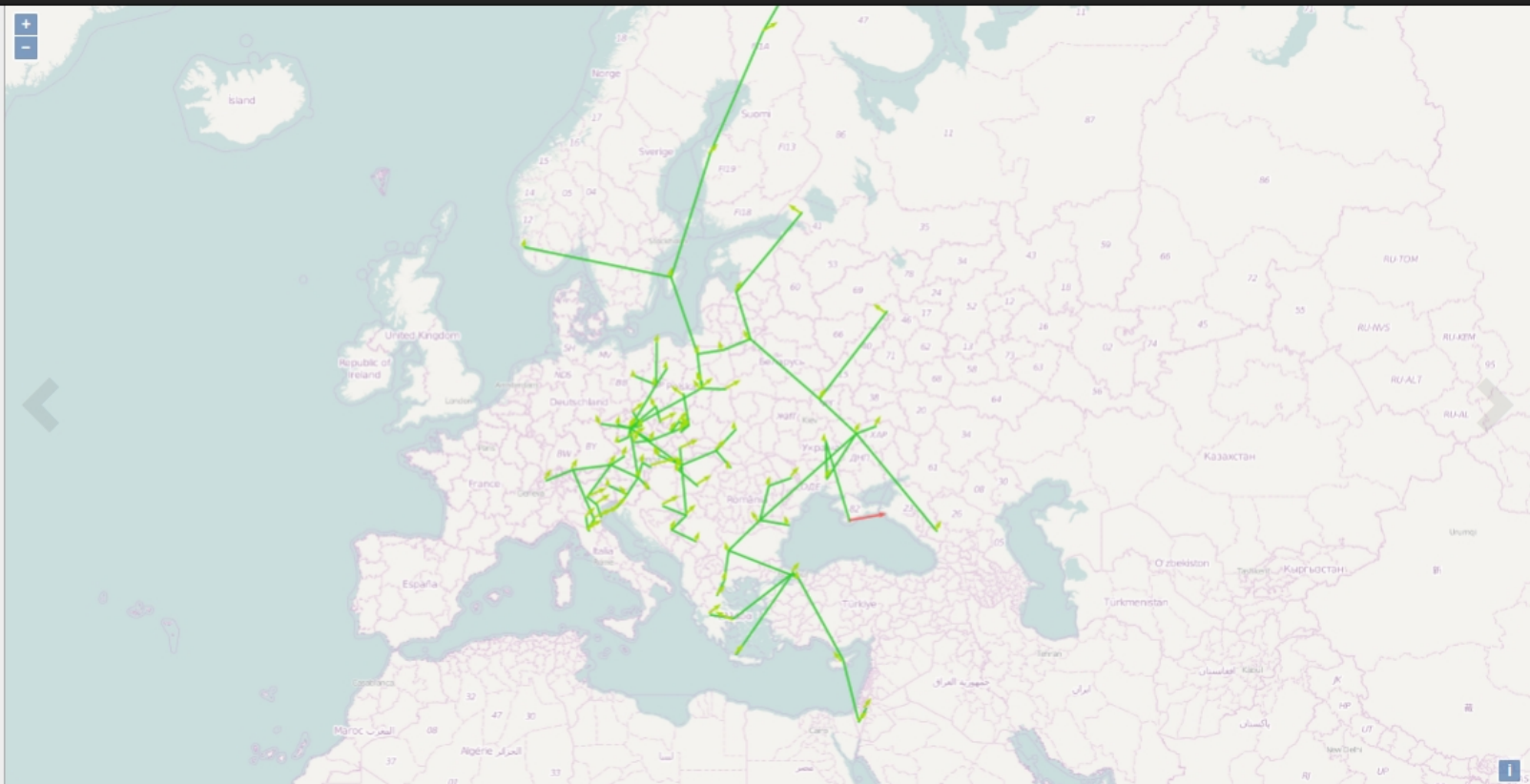
statmin

Station name

Day: 262  
Date: 2015-09-19  
MJD: 57284.0  
GPSWeek: 1862-6  
Select date 


### Base Layers

- OpenStreetMap
- EnviSat
- National borders
  
- AMO
- GRC
- CEG
- MON
- EUR
- points
- baselines
- horizontal
- up
- station name



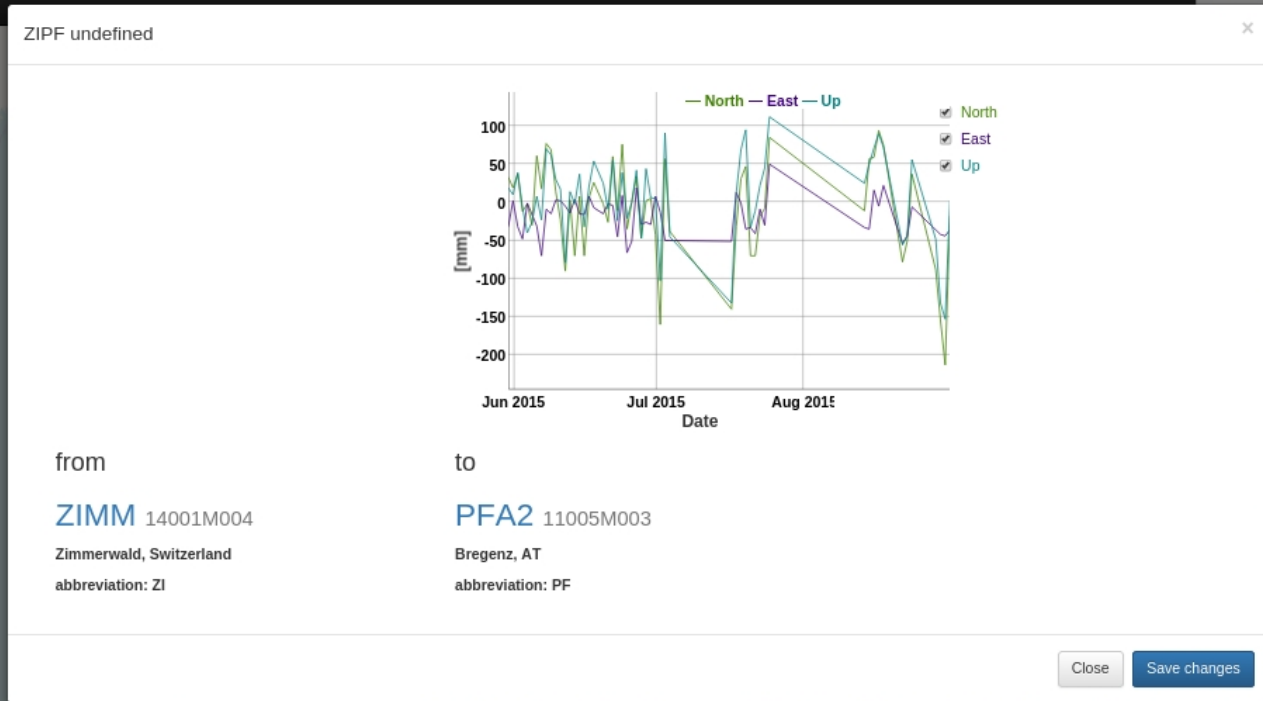


statmin

Day: 262  
 Date: 2015-09-19  
 MJD: 57284.0  
 GPSWeek: 1862-6  
 Select date 

Base Layers

- OpenStreetMap
- EnviSat
- National borders
- AMO
- GRC
- CEG
- MON
- EUR
- points
- baselines
- horizontal
- up
- station name



# Next steps

- Postprocessing service
- Transfer DC and AC to BEV
- Reprocessing
- statmin