

GPS data analysis at the swisstopo (LPT) LAC

D. Ineichen, E. Brockmann



Bundesamt für Landestopographie
Office fédéral de topographie
Ufficio federale di topografia
Uffizi federal da topografia

4th Local Analysis Centres Workshop, Graz, September 18-19, 2003

Map of swisstopo's contribution to the EPN



© epncb

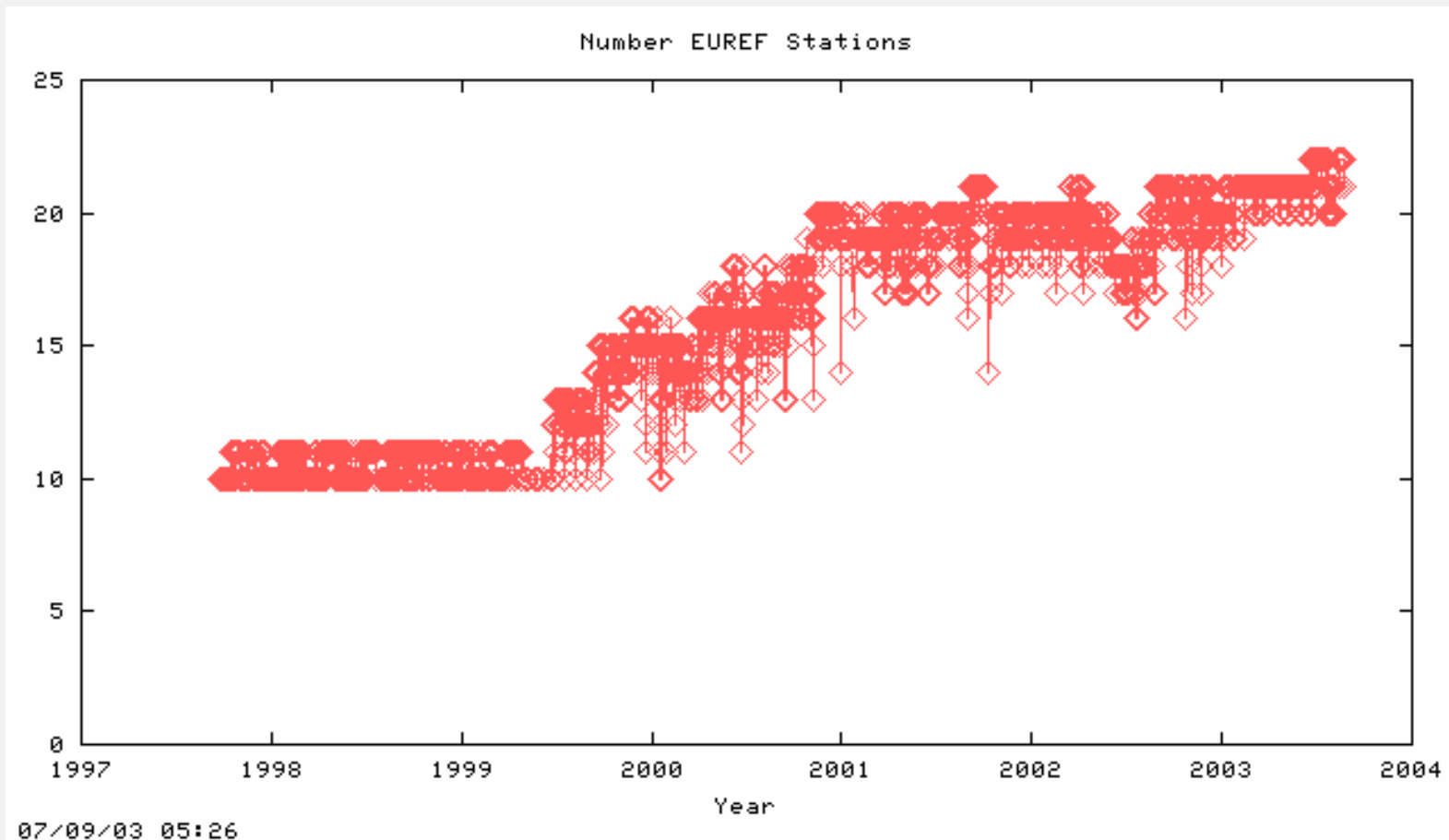
- The subnetwork consists of 23 sites
- New included sites since the last LAC workshop:
 - BUDP
 - REDU
 - LINZ
- At present, 1 site (LINZ) not included in data processing due to missing data (inactive site)

Processing options

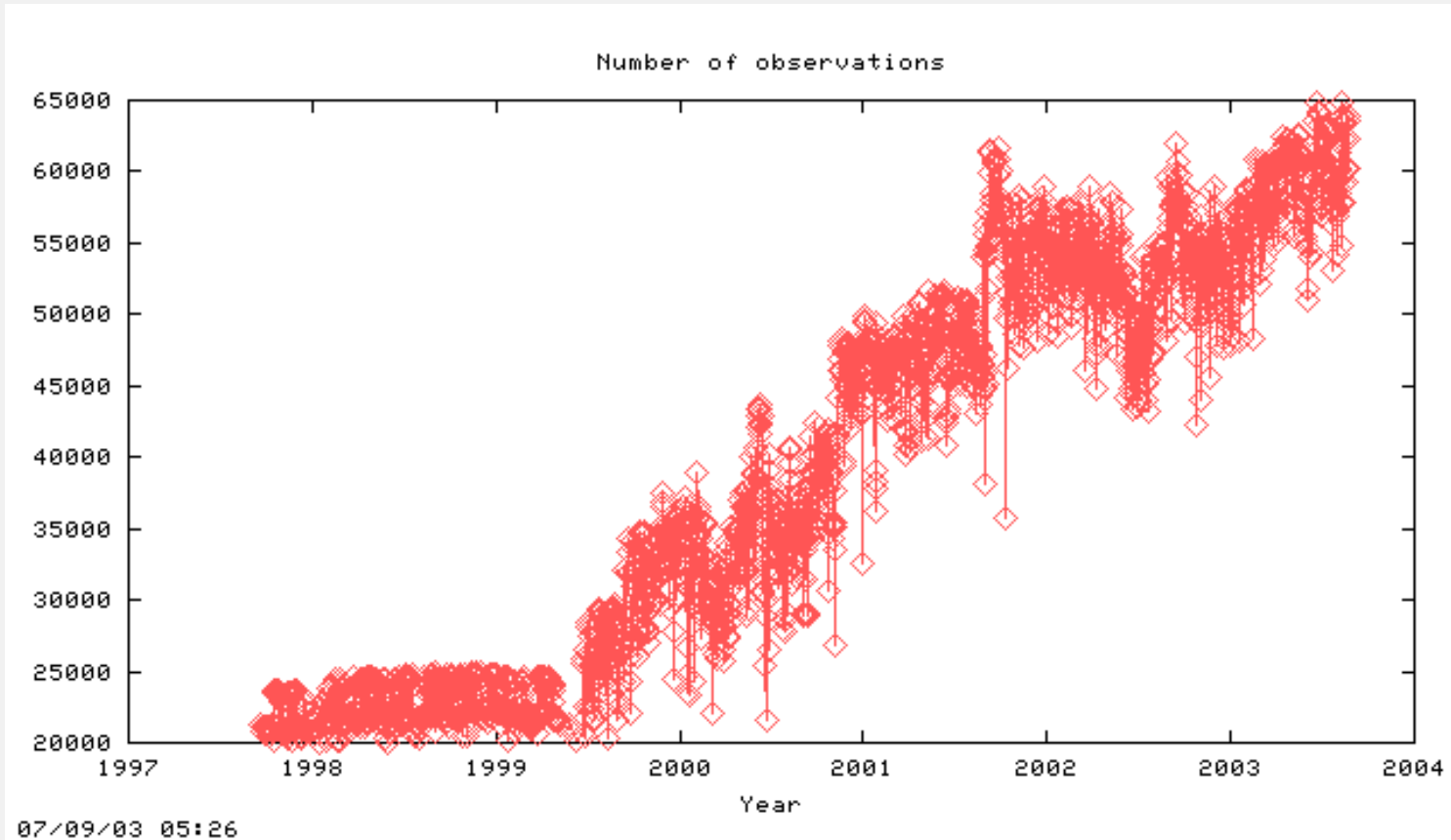
The processing options are in accordance to the processing options proposed at the last LAC workshop in Warsaw:

- IGS precise orbits
- Ambiguity fixed, elevation dependent weighting
- Elevation cut-off angle 10 degrees
- Estimation of 24 Troposphere parameters per day
- Mapping function Dry-Niell, no a priori troposphere
- 180 second sampling rate for the final solution
- The final troposphere parameters generated after constraining the coordinates of the daily NEQ to the weekly coordinate solution

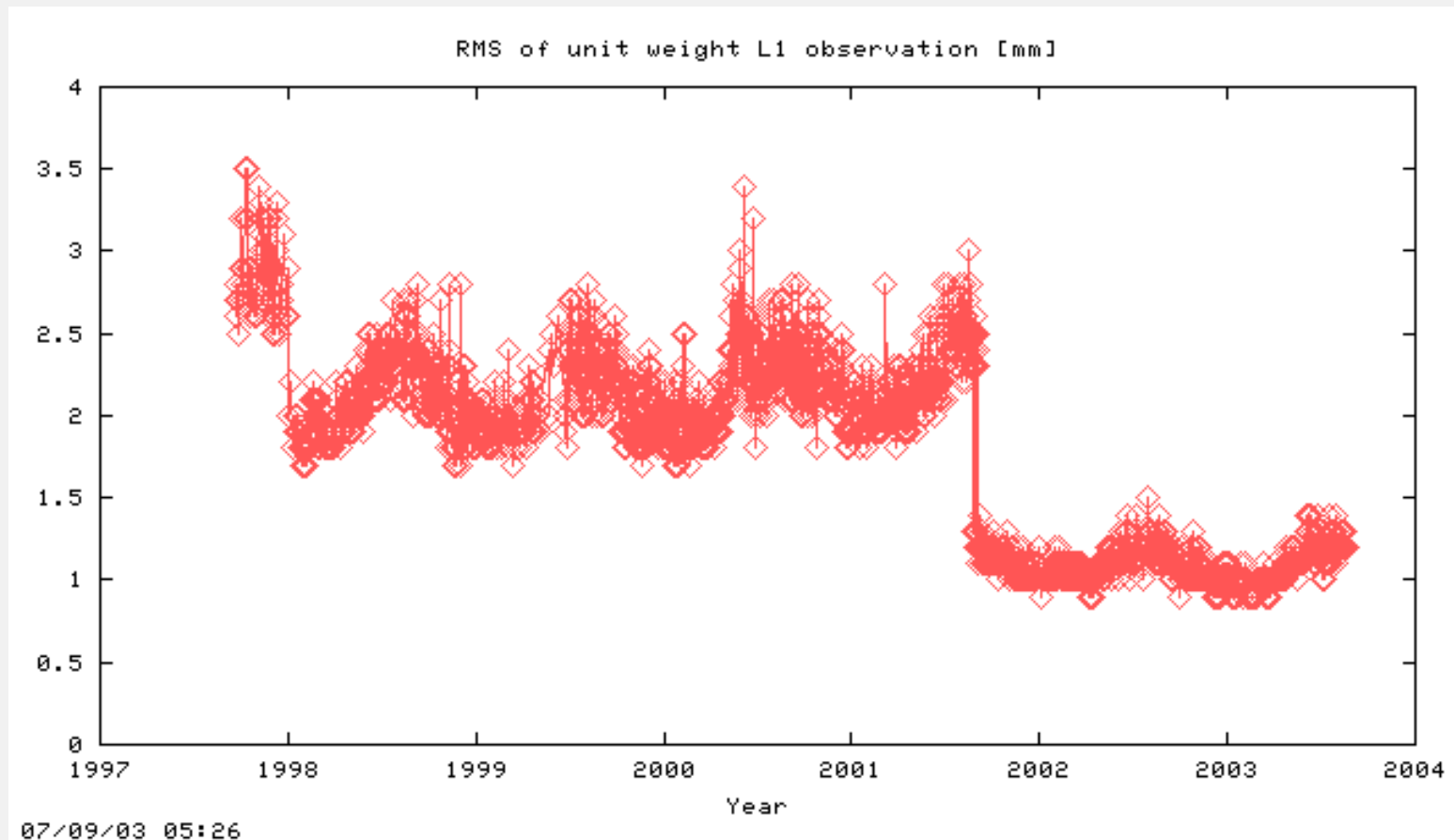
swisstopo contribution to EUREF: Number of stations



swisstopo contribution to EUREF: Number of observations

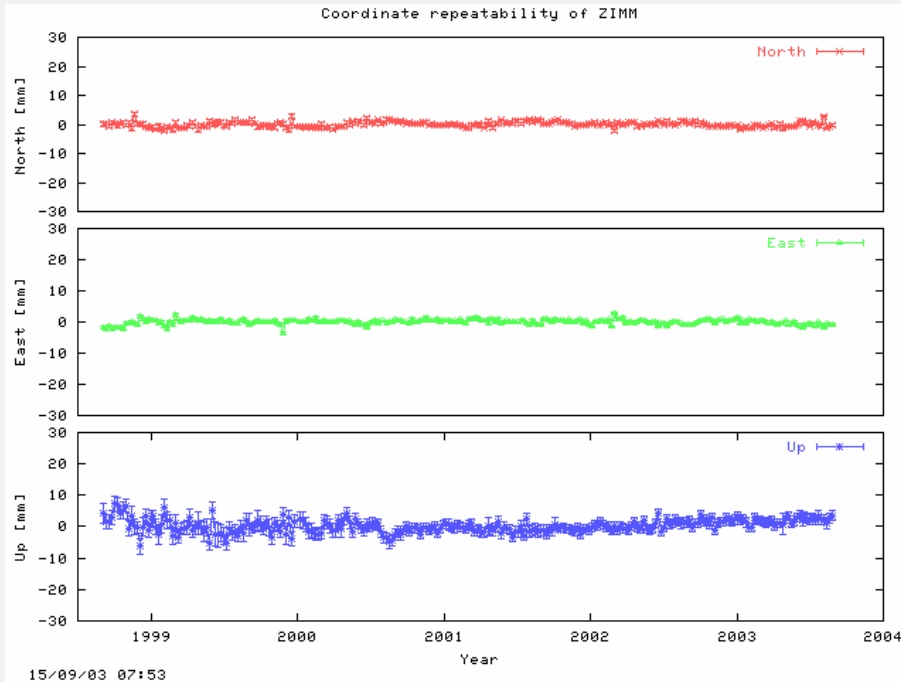


swisstopo contribution to EUREF: RMS of unit weight

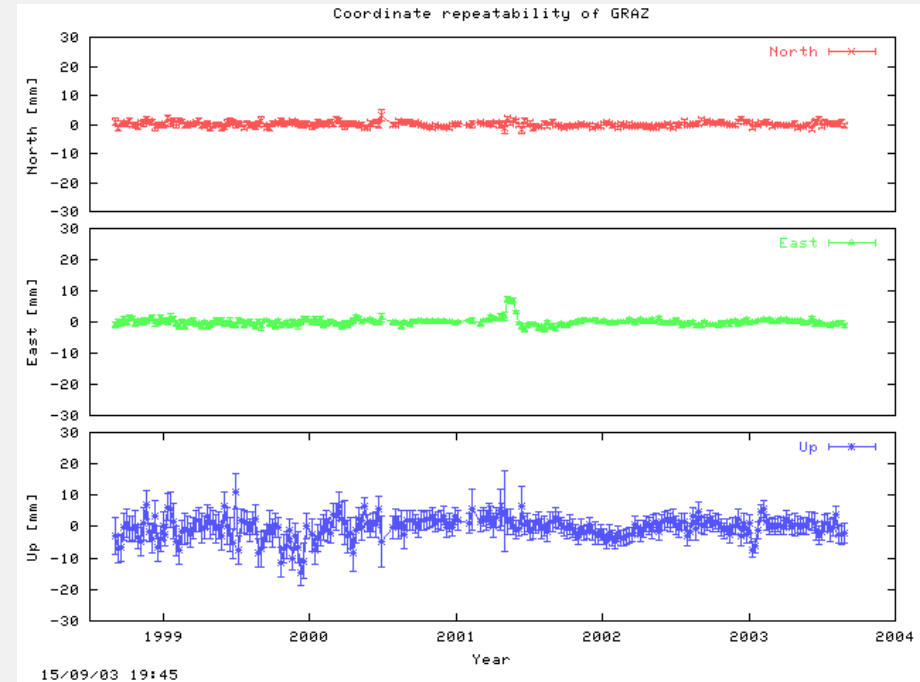


Time series (examples)

Site Zimmerwald

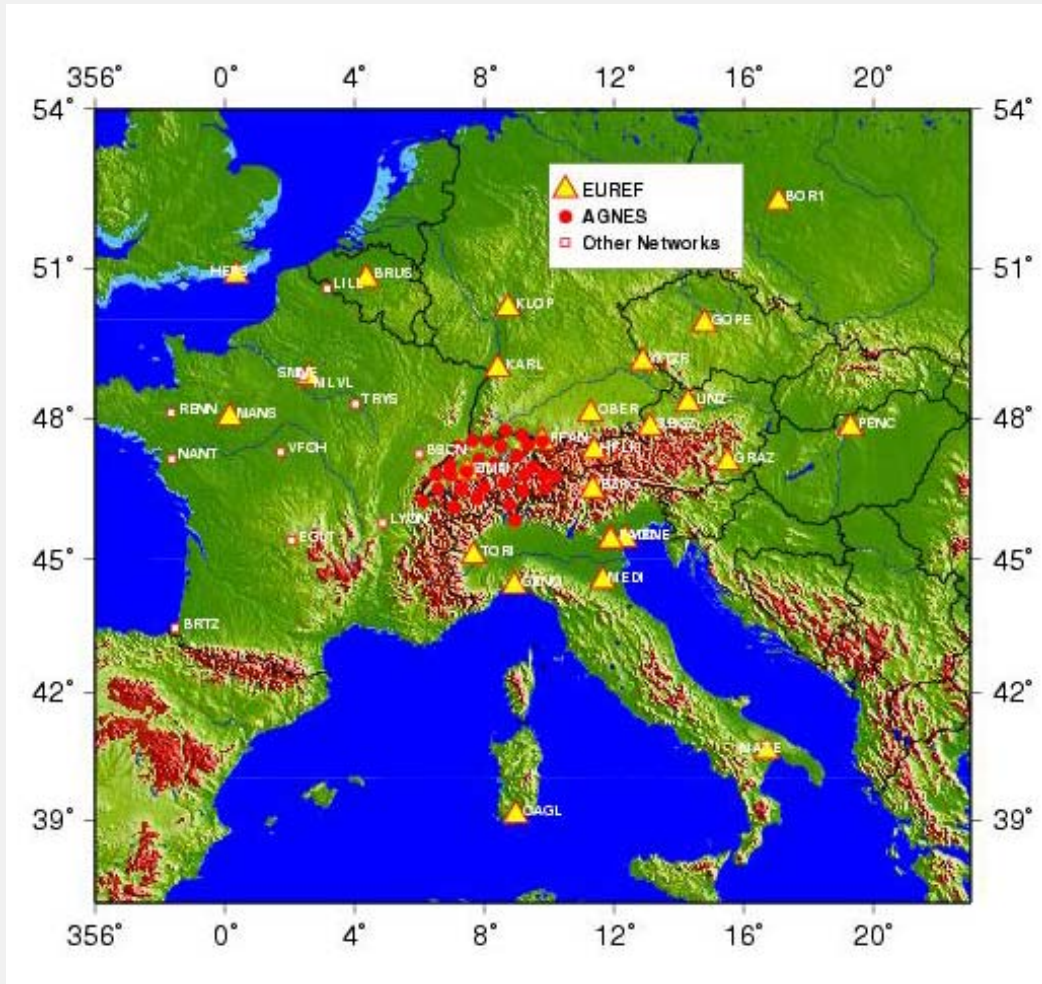


Site Graz



All results are weekly updated and available at
www.swisstopo.ch/en/geo/pnac.htm

AGNES and METEO solutions



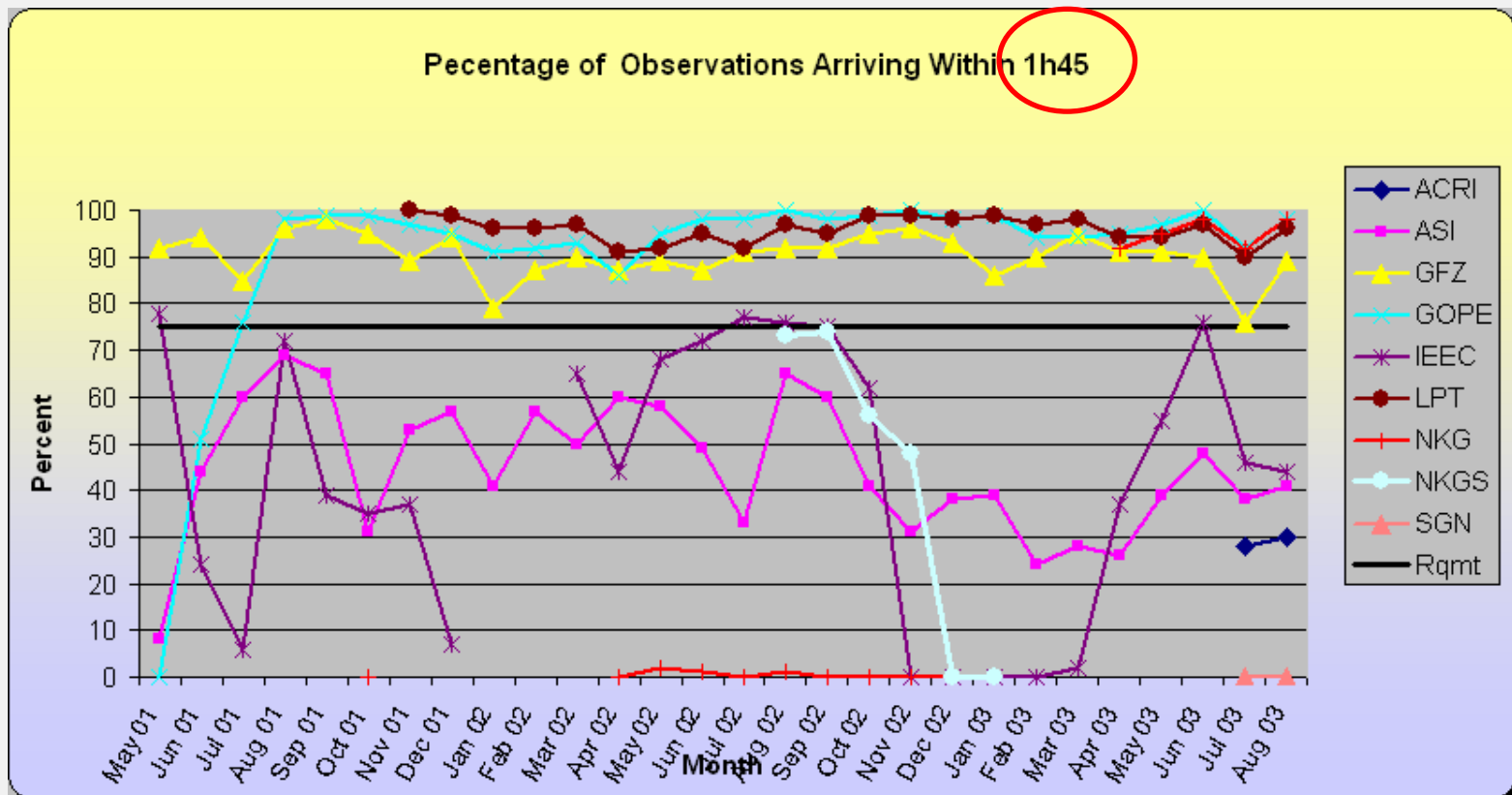
Two more network solutions are routinely processed at LPT:

- „AGNES“ solution:
 - 29 swiss permanent stations (AGNES network) and about 30 European sites
- „METEO“ solution:
 - hourly data processing of the 29 AGNES sites and about 30 European sites (emphasis on France)

Estimation of troposphere parameters (post-processed, near-realtime, and realtime)

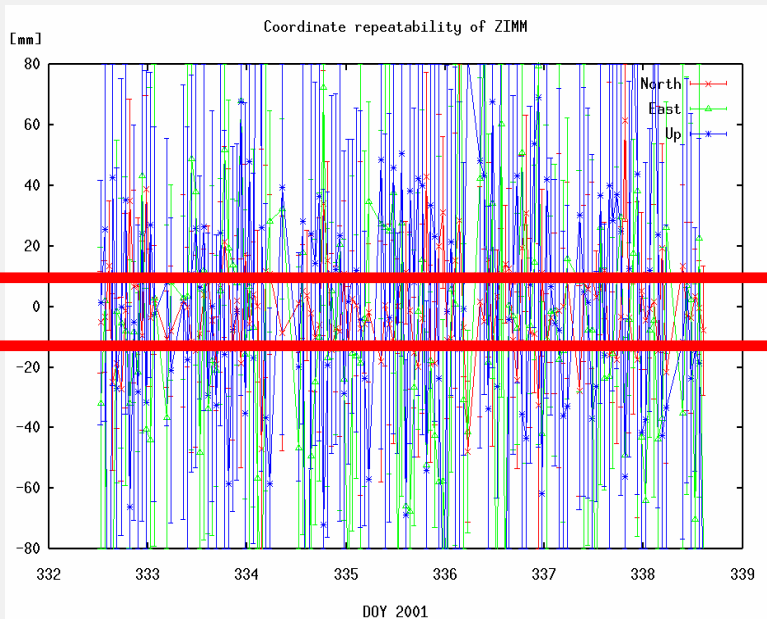
- Post-processed solutions (EUREF, AGNES, delay 21 days)
- Within the scope of EU projects COST and TOUGH:
Near-realtime: hourly processing with a time delay of 1 hour and 15 minutes
- Realtime estimates generated by the realtime positioning software of the AGNES network (GPSNet) by Kalman filtering, available with a time delay of a few minutes
- Comparison with ZTD's extracted from numerical weather predictions and radiosonde data

Timeliness of hourly solutions (from COST-716)

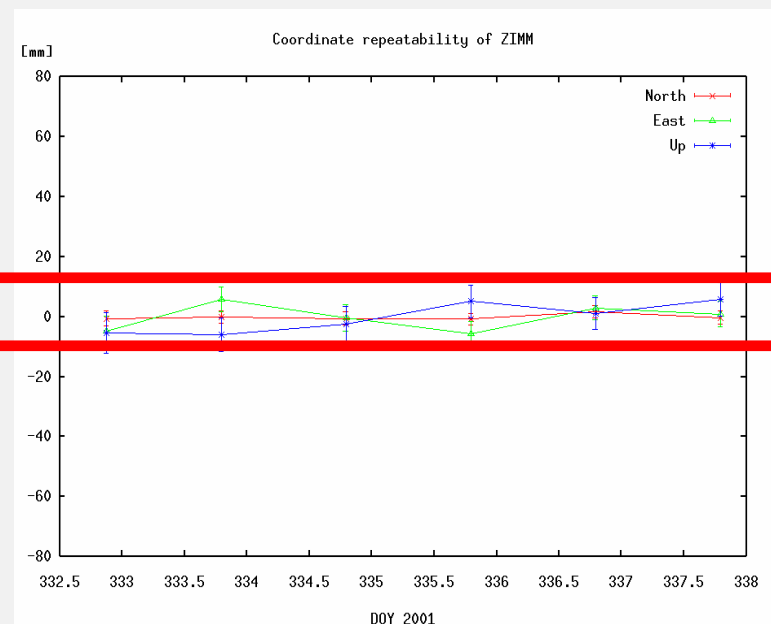


By-product: Station Coordinate validation of the AGNES sites in NRT...

Hourly ...



24-hour average...



± 1 cm

Zimmerwald:

Repeatability [mm]

North
East
Up

Hourly...

16.0
45.0
52.0

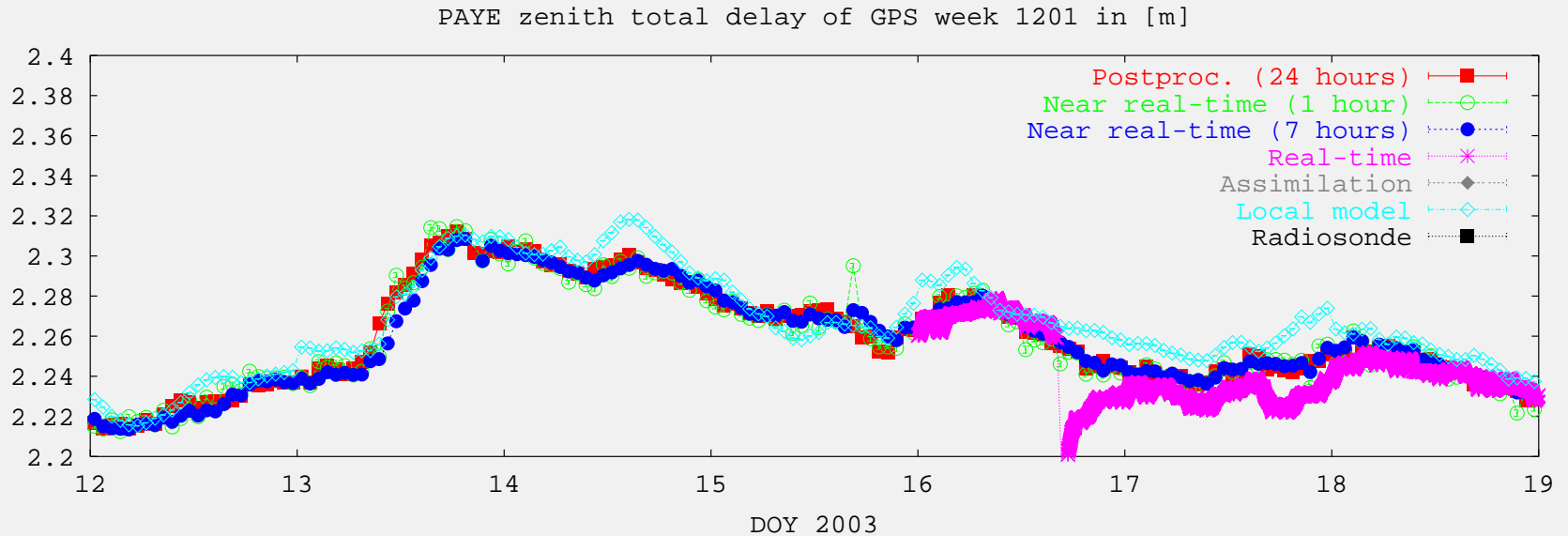
7x24-hours ø

1.0
4.6
5.1

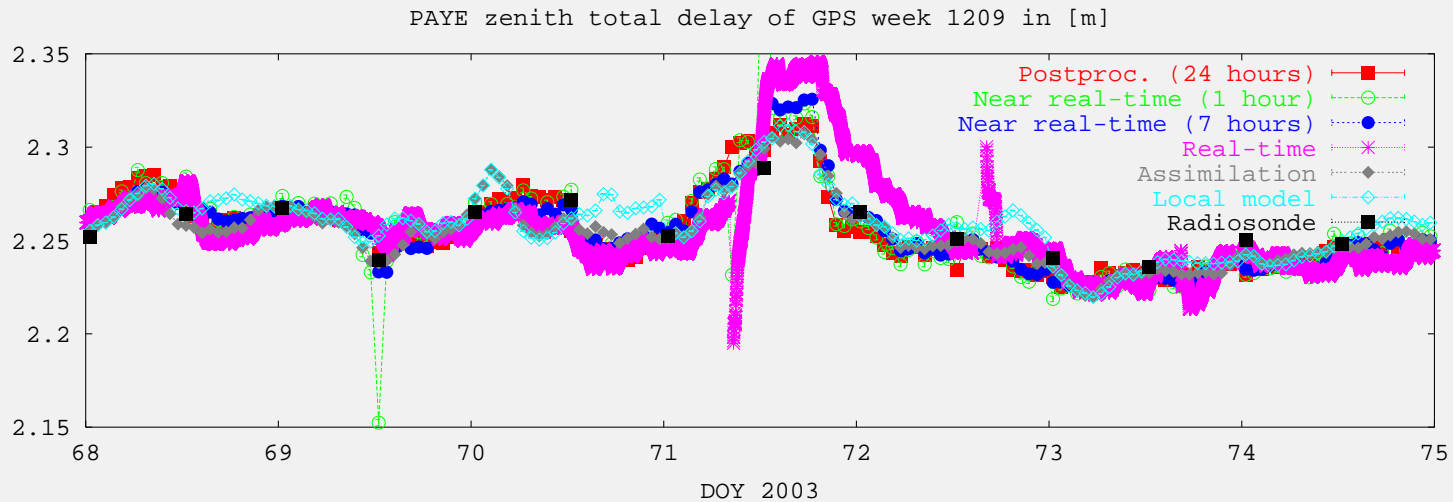
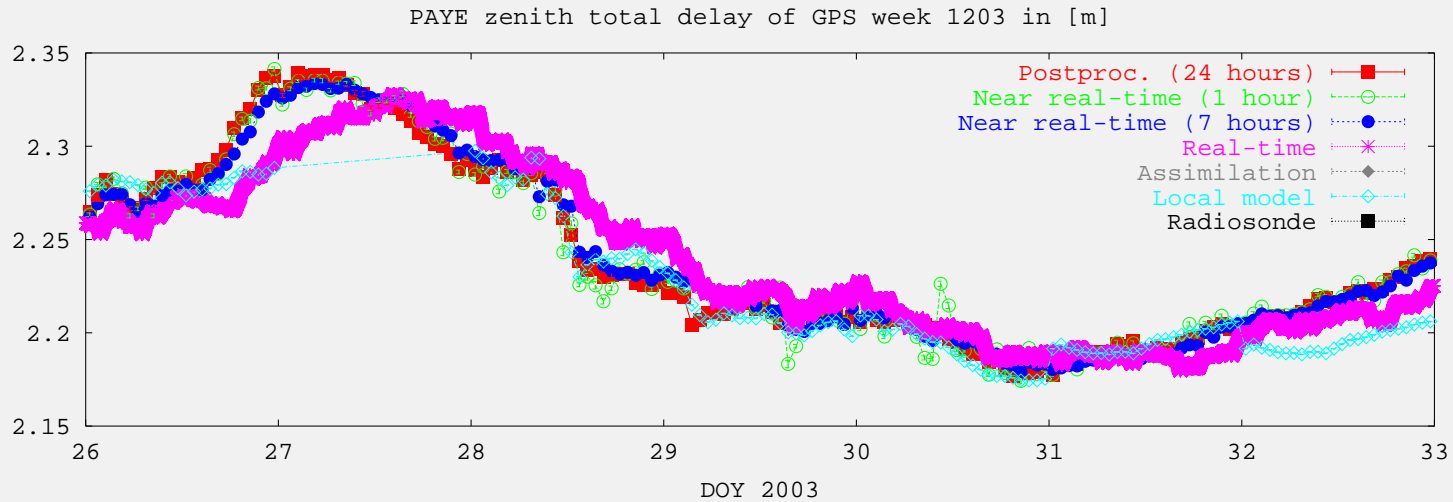
150 weeks

0.9
0.8
2.5

ZTD comparisons (site PAYE)



ZTD comparisons (site PAYE) (2)

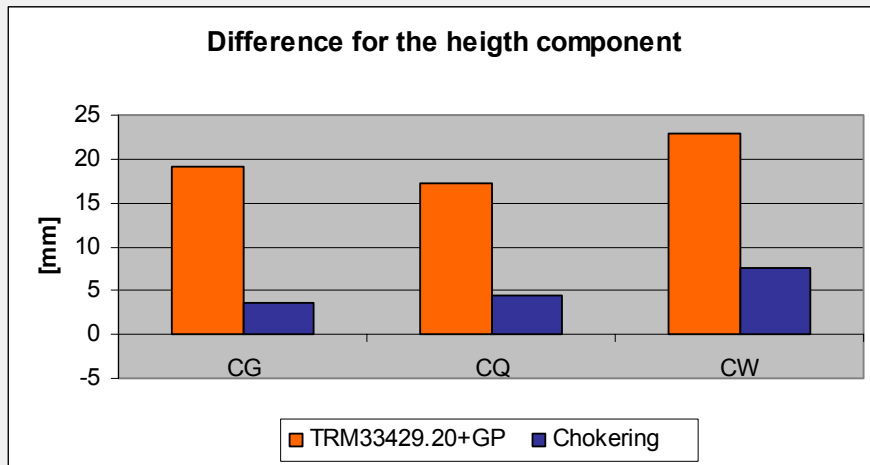


Other Activities

- CHCGN (ECGN): Improvement of the national geoid model
- Automated procedures for campaign processing (federal and engineering surveying...)
- Validation of the VRS concept (cooperation with AIUB)
- Site Zimmerwald: Participation in EUREF-IP project
- Troposphere tomography tests (cooperation with ETHZ)
- Swiss-4D: Deformation Analysis (Strain rates) for Switzerland (collaboration with ETHZ)

Some problems: Antennas

Different height results due to
adapter change only:



Solution types:

CG: L3, no amb. fixed, 10 degree

CQ: L3, amb. fixed, 10 degree

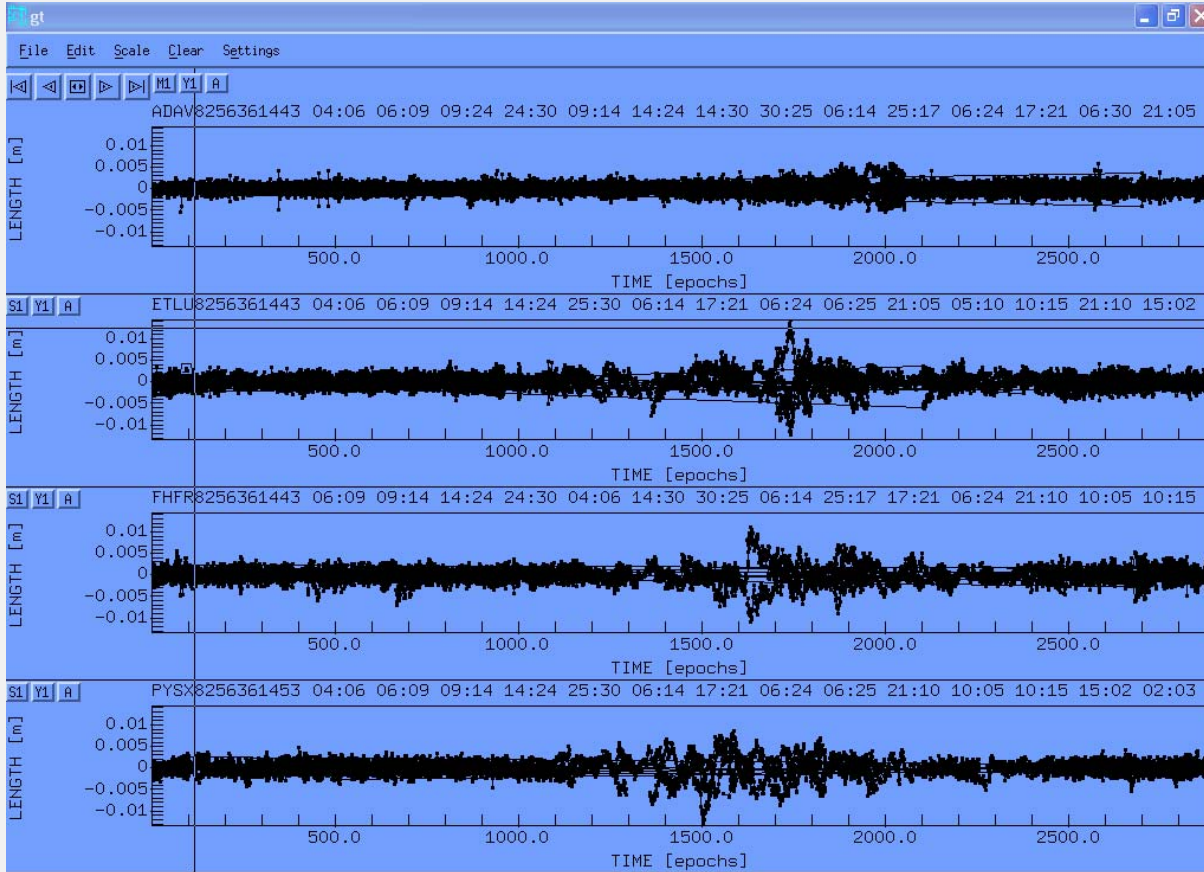
CW: 15 degrees, no elev. dep. weight.



swisstopo

+ + +

Increased RMS values on some days: Residual plots of DOY 165, 2003



4 Baselines of the
swiss AGNES network

Sorted from West to
East:

- ANDE-DAVO
- ETHZ-LUZE
- FHBB-FRIC
- PAYE-STCX

Outlook

- Adoption of the new version of the Bernese GPS Software (5.0) in our routine processing procedures
- Introduction of absolute receiver and satellite antenna phase patterns
- Tests concerning the analysis strategies (e.g., estimating tropospheric gradients)
- Involvement in the TOUGH EU meteo project (follow-up action of COST)
- Involvement in ALPS-GPSQUAKENET (INTERREG III B)?